



Automatic Reset Relays (Pilot Pressure Operated Valves)

Include a wide variety of two-position, three way flow controls that allow a low (30-125 PSI) pilot supply pressure to control a higher pressure, instrument supply flow through the control ports.

DESIGNED to meet a wide variety of requirements: some have manual override capabilities for special applications. The HLR Automatic Reset Relay provides positive flow control by using large diameter springs within the assemblies. Immediate resetting results as our springs shift the spools' position in a smooth, continuous manner. HLR Automatic Reset Relays are manufactured to provide extensive service for constant cycling.

SPECIAL FEATURES include ease of maintenance and a long service life. HLR's Automatic Reset Relays are design with a large diameter stem and are constructed of 316 Stainless Steel for durability and trouble free service. The ease with which routine maintenance can be performed is one of the best features of our controls. Special tools are NOT required; NO special training for service personnel is required. In most cases, the valves do not have to be removed from the circuit and instrument tubing connections do not need to be disconnected.

REASON TO USE: We manufacture a large selection of Automatic Reset Relays to suit almost any application. Some of our relays are universally ported and are adaptable to many application solutions.

For example: The HLR 8100M and 8620B are universally ported relays that can function in 4 different application circuits;

- 1) With a single supply inlet and dual outlets.
 - 2) Can have dual inlet ports with a common outlet.
 - 3) Function as a three-way, normally closed valve.
- or
- 4) Function as a three-way, normally open valve.

Special Application Models available with the following accessories: Panel Mounted, configured with either a Pull or Push override capability, Lock-In assembly and other features.

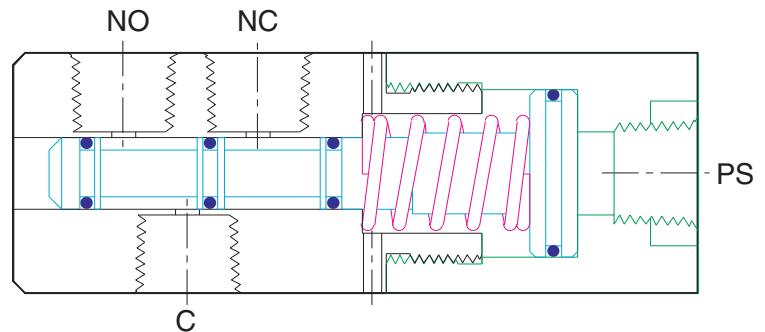
FEATURES

Relayed Pressure:
maximum: 200 PSI

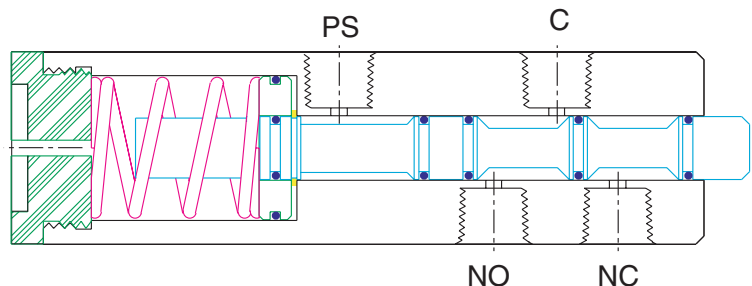
Pilot Supply Pressure:
25 - 125 PSI Max.

Connections:
1/4" - 18 NPT

Material:
316 Stainless Steel



HLR 8620B



HLR 8100M