



# Dual Pilot Relays - HLR 8045 M & HLR 8045M-4W

## HLR 8045M - TWO POSITION, THREE WAY VALVE HLR 8045M-4W - TWO POSITION, FOUR WAY VALVE

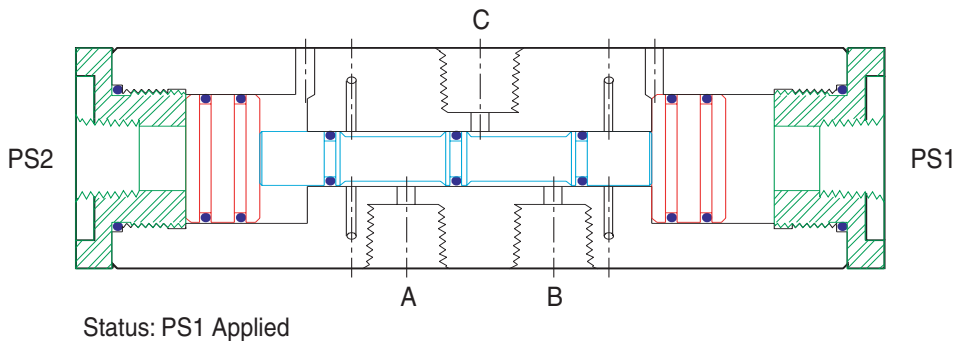
Two position, three (3) way or four (4) way, Dual Pilot Supply pressure operated, flow control valves.

**DESIGNED** to employ a relatively low pneumatic control pressure at either Pilot Supply port (PS1 or PS2) to control instrument supply pressure flow through the body. The Stem's position is shifted by applying Pilot Supply pressure on one PS port with an absence of pressure at the other PS port. The flow control spool can also be shifted by a having higher differential pressure applied at one Pilot Supply port. This valve does not have any spring to provide an automatic reset feature.

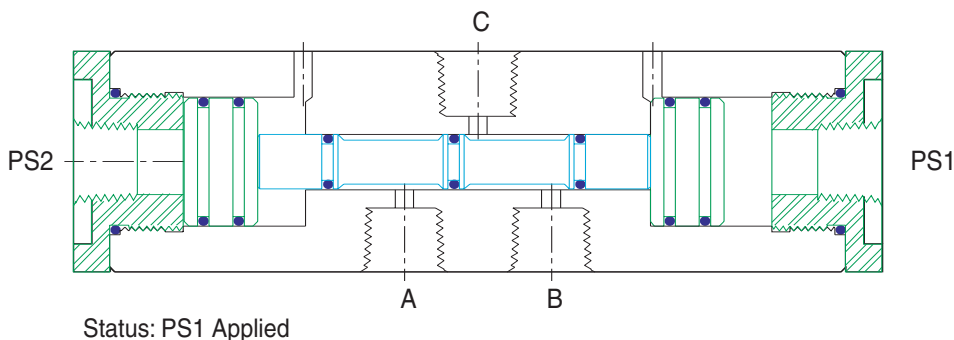
**SPECIAL FEATURES** include the ability to use the relays for either Normally Closed or Normally Open control circuit applications. Port C has a flow path established or is common with another control port, at all times.

**UTILIZATION:** Dual Pilot Relays are most frequently utilized in association with the following applications: Level Control pneumatic Pump Operating control circuit, Alarm Reset, pneumatic Horn circuits, Pressure Sensors "Intermitter" Flow Start/Stop Controllers and cascade control sequencing of Safety System control circuits.

**HLR 8045M-4W  
Two Position, Four Way Valve**



**HLR 8045M  
Two Position, Three Way Valve**



- FEATURES**
- Control Pressure:**  
up to 200 PSI
  - Pilot Supply Pressure:**  
30 - 125 PSI
  - Connections:**  
1/4"-18 NPT
  - Material:**  
316 S.S.