

Velocity Check Valves



Two position, two way Normally Closed, positive flow shut off, safety valves.

DESIGNED to provide instantaneous, positive flow shut-off in the event of either of the following abnormal conditions occur: (1) a high pressure surge at the Inlet, or (2) development of a pressure differential downstream of the Outlet connection.

SPECIAL FEATURES: include the valve's suitability for use with either pneumatic or hydraulic fluid, control circuits. Several different models can be provided for either Field or Panel mount, low pressure (below 200 PSI) applications.

REASON TO USE: Excellent as rupture response, flow control valve when overpressuring occurs to diaphragms, Bourdon Tubes or Helical Coils. The Velocity Check Valve would prevent discharge of fugitive emissions for ruptured Transmitters, Pressure Gauges, pneumatic/electrical Switches and Pressure Sensors.

More frequently, the HLR Series Velocity Check Valves are being utilized in "Push-To-Charge" (pressurize), control circuit applications. A sudden loss of pressure due to actuation of an ESD Valve or other component, will result in instantaneous flow shut off. In this manner, the instrument supply media (Nitrogen, Hydraulic fluid or Natural Gas) is isolated and conserved.

Our Velocity Check Valves are also being utilized with Line Pressure Operated Safety Systems. They provide both the pressure shut-off response and the manual reset feature required by "LPO" systems.

FEATURES

Connections:

Inlet: 1/2" - 14 NPT

Outlet: 1/4" - 18 NPT

Material:

316 Stainless Steel

Panel Mount Models

Hole Cutout Size:

1-11/16" Dia. (42.86m)

Standard Service Models

Working Pressure:

100-10,000 PSI

Max. Test Pressure:

15,000 PSI

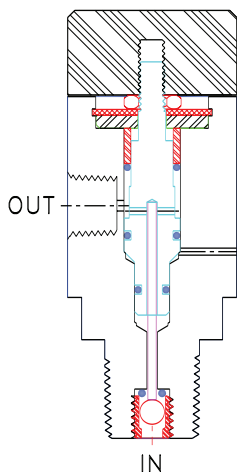
Low Pressure Service Models

Working Pressure:

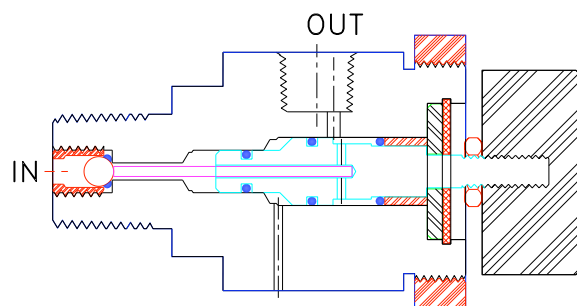
50-200 PSI

Max. Test Pressure:

1,000 PSI



HLR 7790B
Field Mount Unit

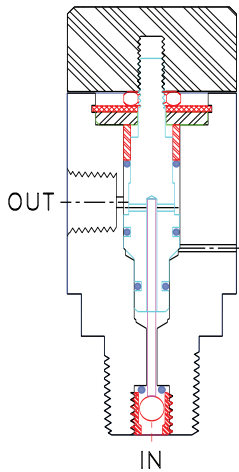


HLR 7790LP-PM
Low Pressure Panel Mount Unit

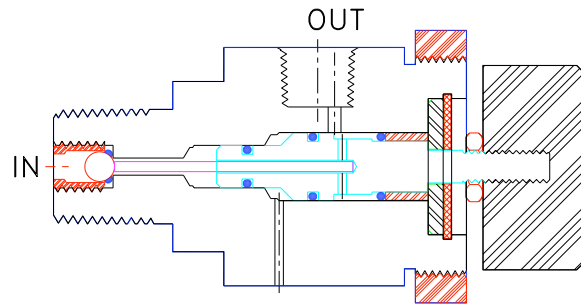


Velocity Check Valve Models

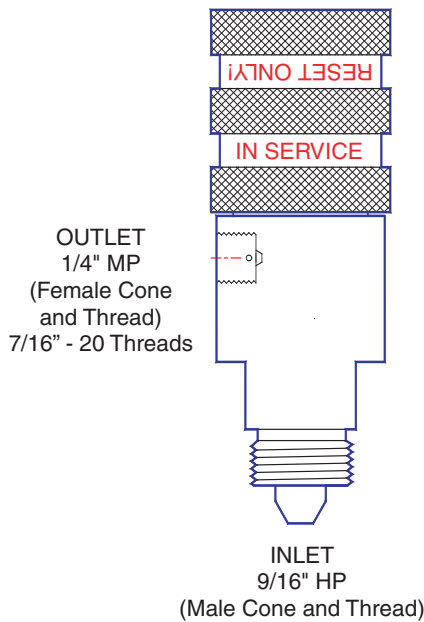
COMMON FEATURES: Two Position, Two Way Normally Closed, Differential Pressure Operated, Positive Flow Shutoff



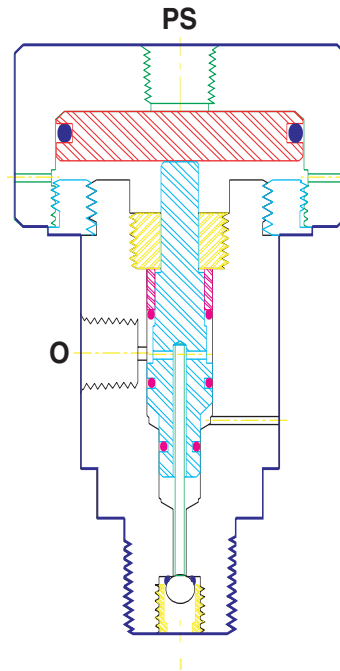
HLR 7790B
 10,000 PSI Working Pressure
 Standard Field Mount Unit
 Manual Reset



HLR 7790LP-PM
 1,000 PSI Working Pressure
 Special Low Pressure Service
 Panel Mount Unit
 Panel Hole Cutout Size: 1-11/16" inch dia. (42.86mm)



HLR 7790B15
 15,000 PSI Working Pressure
 Field Mount



HLR 100-4
 10,000 PSI Working Pressure
 Field Mount
 Pilot Pressure Operated & Reset